



# viapol Systema

Polyester & Fibreglass

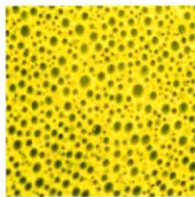
The latest generation  
in waterproofing membranes



Vetroasfalto's target during the realization and study of this polymer bitumen membrane was to combine with no compromises low cost and high performances.

**VIAPOL SYSTEMA** is specifically oriented to the field of application, that will recognize and appreciate the values.

## VIAPOL SYSTEMA COMPOUD

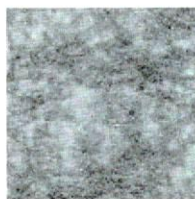


A polymer bitumen compound containing the reinforcement is a result of a particular chemical formulation conceived to meet the needs of high quality product. Thanks to meticulous selection of raw materials and severe controls during manufacturing process, the product's durable quality is guaranteed.

The microscopic fluorescent picture testifies for high homogeneity of the compound and a perfect distribution of the bituminous part and the polymeric one (black and yellow respectively).

## REINFORCEMENT

The reinforcement of elastoplastomeric membranes of Systema line represents most evolved achievements of the modern technology and when combined adequately it can satisfy every specific necessity of waterproofing.



Reinforcements are characterized by:

- total compatibility with compound
- excellent impregnability
- absence of delaminations
- excellent dimensional stability
- high flexibility and elasticity
- tensile properties, tear resistance, punching and fatigue resistance

## DESCRIPTION AND SPECIFICATIONS

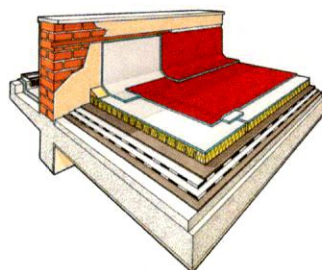
A polymer elastoplastomeric bitumen membrane based on distilled bitumen modified by high molecular weight polymers. **Viapol Systema** is reinforced by very resistant non-woven polyester. **Viapol Systema** is available with a protected surface of natural slate chippings in a choice of colours.

## USE AND APPLICATION

Ideal for reinforced concrete prefabricated flat roof coverings, can also be used as reinforced concrete and hollow tiles mixed slabs with or without thermo insulation, as well as vault coverings, sheds or inclined roofs, carriageable or walkable coverings, rehabilitation of waterproofed coverings, foundations, underground masonry and floors, undertile solutions, terraces, floors and balconies, tubing, pools, irrigation tubes, basins. In the slated version is used specifically as a finishing layer for waterproofing systems that are not destined to be walked upon or as a protection under tile coverings.



**SINCERT** CE



**vetroasfalto**  
EXCLUSIVE WATERPROOFING TECHNOLOGIES

VETROASFALTO Spa reserves the right to improve and change its own products at any time and without prior notice or advice. The use of Vetroasfalto products is determined by local conditions and the individual requirements of each contract. Vetroasfalto may not be held responsible for the application of its products and for conditions beyond its control.

CHARACTERISTIC	EN DRC	UNIT	VALUE		TOL
Visible defects	EN 1850-1	–	pass		–
Thickness (STANDARD)	EN 1849-1	mm	4,0		–10%
Areic Mass (MINERAL)	EN 1849-1	kg/m <sup>2</sup>	4,5		–10%
Width and length	EN 1848-1	m	1,00	10,00	–1%
Straightness	EN 1848-1	mm	max 20		pass
Max Tensile Force (L/T)	EN 12311-1	N/5 cm	500	350	–20%
Elongation (L/T)	EN 12311-1	%	40	40	–15 abs
Resistance to Tearing (L/T)	EN 12310-1	N/5 cm	140	160	pass
Resistance to Static Loading	EN 12730-A	kg	15		pass
Resistance to Impact	EN 12691	mm	700		pass
Joint Strenght (L/T)	EN 12317-1	N/5 cm			npd
Peel Resistance of Joint (L/T)	EN 12316-1	N/5 cm			npd
Pliability (Cold Flexibility)	EN 1109	°C	–5		pass
Pliability (Aged)	EN 1296	°C			npd
UV Ageing (Visible Defects)	EN 1297	–	pass		–
Watertightness	EN 1928	kPa	60		pass
Water Vapour Permeability	EN 1931	µ × 1.000	20 (default)		npd
Water Vapour Permeability (Aged)	EN 1296	µ × 1.000			npd
Form Stability (New/Aged)	EN 1110	°C	120	120	pass
Dimension Stability (L/T)	EN 1107-1	%	–0,25	+0,15	pass
Root Resistance	Gruppo MBP	% add.vo			npd
External Fire Performance	EN 13501-5	classe	F (roof)		npd
Reaction to Fire	EN 13505-1	classe	F		npd
Adhesion of Granules (MINERAL VERSION)	EN 12039	%	≤ 30		pass

<b>STANDARD</b>	Thickness mm.	2	3	4	5
	Rolls x Pallet n.	–	30	23	20
<b>MINERAL</b>	Areic Mass kg/m <sup>2</sup>	3,5	4,0	4,5	5,0
	Rolls x Pallet n.	–	25	25	20

<b>Upper Finishing</b>	Anti-adherent dotted talc Slate chips/granules (mineral self-protection)
<b>Lower Finishing</b>	Thermo-fusible polyethylene film
<b>Pakaging</b>	Shrinkable polyethylene film, on pallet

<b>Additional Info</b>	Polymer Bitumen Membrane info Sheet, current release
------------------------	--